



23<sup>rd</sup> World Congress on  
**Safety and  
Health at Work**  
Sydney 2023

## ULURU – KATA TJUTA NATIONAL PARK

Called the Heart of the Nation, the ‘Red Centre’ is arid, dramatic, vast, a land of extremes and home of Uluru, Australia’s spectacular monolith. Discover other geological wonders such as Kata Tjuta. View a magnificent sunset and sunrise over the huge monolith that is Uluru and discover its significance to the local Indigenous people.

2nd - 4th December





Called the Heart of the Nation, the 'Red Centre' is arid, dramatic, vast, a land of extremes and home of Uluru, Australia's spectacular monolith. Discover other geological wonders such as Kata Tjuta. View a magnificent sunset and sunrise over the huge monolith that is Uluru and discover its significance to the local Indigenous people.

### **Day One – Saturday 02 December 2023**

---

Please make your own flight arrangements to arrive at Ayers Rock Airport prior to 1pm. After collecting your luggage, please make your way outside the airport and board the shuttle bus to your Accommodation.

Tour Details: Uluru Sunset / Tour Duration: 2 hours / Tour Departure: Between 2-3.30pm

Come and join your SEIT Outback Australia Guide to explore the most profound and culturally significant monolith in Australia. Departing the resort, the tour will travel through the landscapes to the entrance of the Uluru Kata Tjuta National Park. From this point, it is only a matter of minutes before the spectra of Uluru rises from the sand dunes to demonstrate its enormity and presence in this country .

Our first step allows you a photographic opportunity of this amazing icon. With Uluru looming in front of you, you journey toward the base. Walk with your guide to a place of tranquillity. The closer you wander the more you surrender to the realisation of the sheer size of this monolith.

## Day Two – Sunday 03 December 2023 (B)

---

Breakfast at Leisure at the Accommodation

Tour Details: Sunrise at Kata Tjuta / Tour Duration: 2 hours / Tour Departure: 4.45 – 6.15am

Your SEIT Outback Australia guide will meet you at the entrance of your accommodation at Ayers Rock Resort and your tour will travel through the landscape to the entrance of Uluru Kata Tjuta National Park. From there is it a 40 kilometres journey through the desert landscape to the mighty rock formation.

On arrival at the viewing area you walk to the best vantage point to see the 36 domes that comprise this spiritual place while watching the sun's morning glow as the desert comes alive. We make our way to the western side of Kata Tjuta where you will have the opportunity to relax and enjoy an outback picnic breakfast. As you approach the entrance to Walpa Gorge, named for the wind (Walpa) that whistles between the massive domes that shape Kata Tjuta, the result of eons of weathering and continual upheaval, your guide will share the significance of this men's sacred ceremonial site.

We take a stroll between these mighty conglomerate rock walls as your guide explains how the environment and the geology have evolved over millions of years.

Your guide will return to your accommodation at Ayers Rock Resort.  
Remainder of the evening at leisure

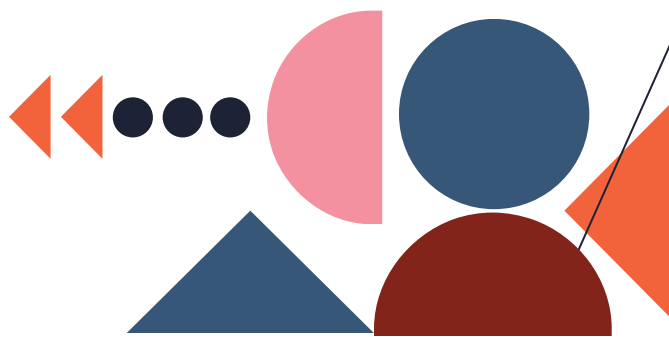
## Day Three – Monday 04 December 2023 (B)

---

Breakfast at Leisure at the Accommodation

Day at leisure. Choose from any of the complimentary experiences that Voyages Resort offer all their guests. From visiting camels to didgeridoo workshops to learning about local bush tucker, there is something for everyone.

Board your shuttle bus to Ayers Rock Airport to catch your flight.



## What to bring with you

### Clothing

- Socks
- Sandals/thongs walking shoes
- Waterproof jacket
- Jeans/trousers
- Pullover/cardigan
- Hat
- Swimsuit
- Sturdy Footwear/Good
- Sleepwear
- Shirts/blouses
- Warm jacket
- Short/skirts

### General Items

- Toiletries
- Medications
- Sunscreen
- Beach Towel
- Insect Repellent
- Daypack or Small Bag
- Camera
- Sunglasses
- Mobile Phone
- Cash or Credit Card

## Pre and Post Tour Terms and Conditions

### Tour Inclusions

- Accommodation as specified (where possible)
- Sightseeing as per the itineraries
- Breakfast daily and other meals as specified (Breakfast = B, Lunch = L, Dinner = D)
- Return Airport transfers from Uluru to Airport

### Not Included

- Airfares to/from destination
- Meals other than specified
- Personal expenses
- Beverages & anything not specifically mentioned

### Airfares

Domestic airfares to pre and post tour destinations are not included in the ground cost of the tour. Please advise the OSH 2023 Managers of your flight details so that they are aware of your arrival and departure time. You may still register on the pre and post tours if you have not finalised your travel arrangements. On completion of the registration form, you will be issued with an access key, which you need to record as this key allows you to access and update your booking and registration details at a later date.

## **Pre and Post Tour Terms and Conditions**

Payments are non-refundable as of 21 days prior to tour

All pre and post tours are based on a minimum numbers of participants, as stated. If minimum numbers are not reached by sixty (60 days) before the commencement date of the tour, delegates will be informed and possible alternative arrangements offered or a complete refund will be made.

Where participants cancel their tour this must be in writing to OSH2023 Managers by emailing [osh2023@arinex.com.au](mailto:osh2023@arinex.com.au) no later than three weeks (21 days) prior to the tour date for refund in full to be provided. For cancellations after this date no refunds will be made. If the tour at any points is cancelled by the organizers or provider there will be a full refund provided.

### **Travel Insurance**

Travel insurance is strongly recommended and should be arranged by individual delegates. Please note that OSH Tour Managers takes no responsibility of extra charges incurred due to cancellation. Please check with your travel insurance company on the terms and conditions of the purchased travel insurance.

### **Airfares**

Domestic airfares to pre and post tour destinations are not included in the ground cost of the tour. Please advise the OSH Tour Managers of your flight details so that they are aware of your travel arrangements. You may still register on the pre and post tours if you have not finalised your travel arrangements. On completion of the registration form, you will be issued with an access key, which you need to record as this key allows you to access and update your booking and registration details at a later date.

### **Disclaimer**

The services specified in these tour descriptions are available at the time of writing. However, in the event that any service(s) becomes unavailable for any reason, OSH Tour Managers will make every effort to supply alternative services of an equal standard and value but cannot accept any responsibility for failure to provide the specified services.

